

## LED 8 inch square Recessed Downlight

### QUICK FEATURES

- 5 CCTs selectable
- Available at 120V or 120-277V
- Wet Locations listed (Not suitable for coastal / salt water area)
- cUL listed / ENERGY STAR certified
- RoHS compliances
- Tested in accordance with IESNA LM79 & LM80
- 5 year warranty

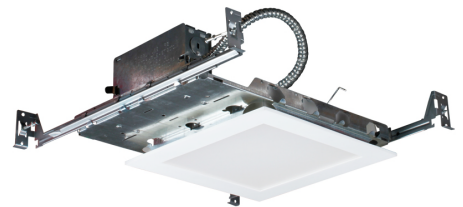
### PERFORMANCE DATA

Input Voltage	120V or 120-277V
Frequency	50 / 60Hz
T Ambient	-30°C ~ 40°C (-22°F ~ 104°F)
CRI	≥80 or ≥90

(all values at 25°C without a dimming control in circuit)



LED 8 inch Square Frame



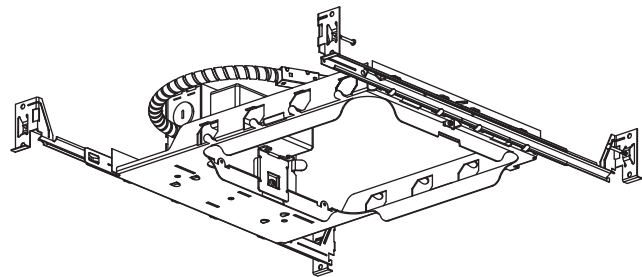
LED 8 inch Square Trim



### FRAME

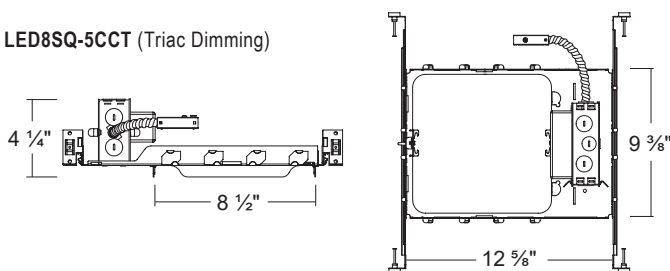
#### Features

- Galvanized steel construction plaster frame-in with J-Box and captive hanger bar with real nail.
- Available at 120V or 120-277V
  - 120V : Triac dimming
  - 120V/277V : 0-10V dimming
- LED Driver is mounted directly on the frame.

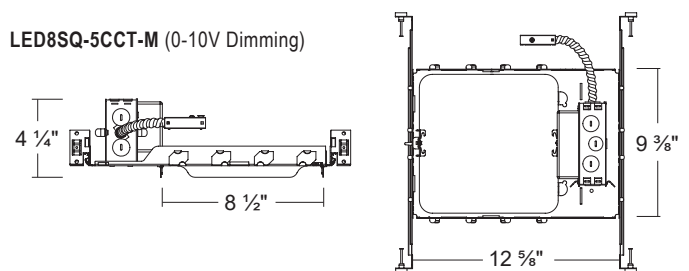


### Dimensions

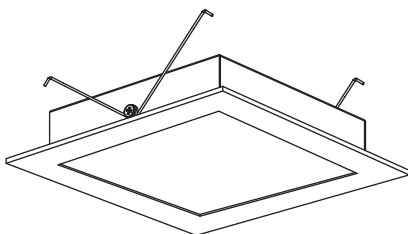
LED8SQ-5CCT (Triac Dimming)



LED8SQ-5CCT-M (0-10V Dimming)



### TRIM

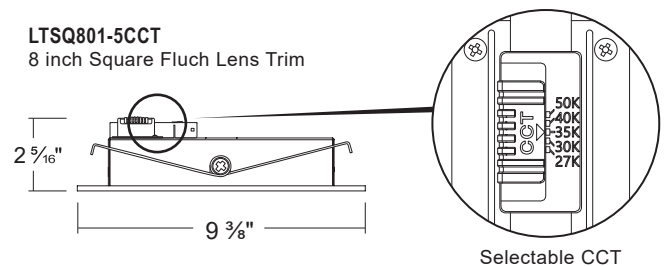


#### Features

- Aluminum body dissipates heat from the LED board.
- Square ring is made of plastic.
- Use select 5 kinds of CCT with a switch on the connector.
- Easy installation with torsion spring.

### Dimensions

LTSQ801-5CCT  
8 inch Square Flush Lens Trim



Selectable CCT

## LIGHT SOURCE TEST TABLE

Wattage	CRI	CCT	Lumen
18 W	90	2700 K	1,480 lm
		3000 K	1,500 lm
		3500 K	1,530 lm
		4000 K	1,550 lm
		5000 K	1,560 lm

## ORDERING INFORMATION

Model NO.	Description
LED8SQ-5CCT	8" LED Square frame / Driver with Flex. Conduit connected to J-Box directly / 2 power wires / No diecast connector / 120V / Triac Dimming
LED8SQ-5CCT-M	8" LED Square frame / Driver with Flex. Conduit connected to J-Box directly / 2 power wires / No diecast connector / 120-277V / 0-10V Dimming
LT8SQ801-5CCT	8" LED Square Trim / Flush Lens / Torsion Spring / 2700K, 3000K, 3500K, 4000K, 5000K

## LIST OF COMPATIBLE DIMMERS

120V (Triac Dimmer Switch)		
Mfr	Model #	Dimming Rate
COOPER	DLC03P	10 - 100%
Leviton	1A1505 / 1C1605	10 - 100%
Leviton	6631 / 6633	10 - 100%
Lutron	CT-603PG / CT-600PR	10 - 100%
Lutron	DV-600PR / DV603PG	10 - 100%
Lutron	DVW-603PGH / DVCL-153P	10 - 100%
Lutron	MACL-153M / TGCL-153P	10 - 100%
Lutron	S-600PR / S-2-LH	10 - 100%
120-277V (0-10V Dimmer Switch)		
Mfr	Model #	Dimming Rate
Lutron	NFTV	10 - 100%
Lutron	NTSTV-DV	10 - 100%
Legrand	CD4FBLW	10 - 100%
Leviton	1P710-DL	10 - 100%

